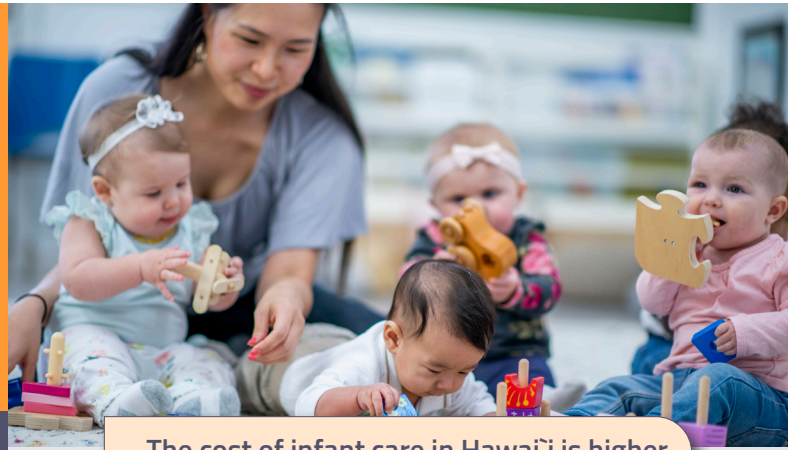
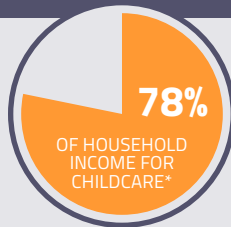


Affordable child care is fundamental to thriving children, flourishing families, and a robust economy.



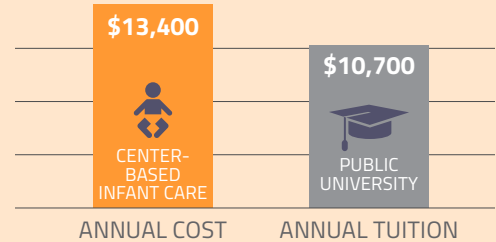
Child care costs are often so high that they create an impediment to work.

Parents living at or below the poverty line pay the majority of their household income for child care.



*Center-based child care for two children

The cost of infant care in Hawai'i is higher than the annual cost of college tuition.



Committee for Economic Development, 2019, www.ced.org, The Business Case For Investing in High-Quality Child Care

33% of parents with children 0-5 have child care arrangements that fall apart within three months.

Galinsky and Johnson, 1998

10% of families in Hawai'i had to make significant job changes due to child care problems.

National Survey of Child Health (2017-2018), Indicator 6.17

Employees experience unproductivity at work caused by child care concerns

Women	57%
Men	33%

Survey of employees with children 0-5

Employers report that child care problems force employees to lose work time

80%

Bond, Galinsky, and Swanbert, 1998

Child care makes a significant difference in the economic health and security of families.

It makes it possible for families to work, reduce their dependence on public assistance, and escape poverty.

When low-income families receive assistance with child care, they are more likely to enter and remain in the workforce, work more hours, and improve earnings.

Reliable access to child care can generate an additional \$79,000 in lifetime earnings for mothers.

Single mothers who receive financial assistance for child care are nearly 40% more likely to maintain employment over two years than those who do not.

Our Child Care System Is Not Meeting The Needs Of Families, Providers, or The Economy, First Five Years Fund, June 2021

Affordable child care is a smart investment with benefits to employers and businesses.

Stable child care can decrease employee absences and reduce turnover.

A lack of child care causes businesses to lose an estimated \$4.4 billion annually due to employee absenteeism.

According to the U.S. Chamber of Commerce Foundation, states miss out on hundreds of millions, if not billions of dollars each year in economic activity due to breakdowns in child care.



CALL TO ACTION

Support child care subsidy programs, like *Child Care Connections* and *Preschool Open Doors*, which help eligible families pay for child care.

Support expansion of affordable child care options.

Support legislation that prioritizes the professional development of the early learning workforce.